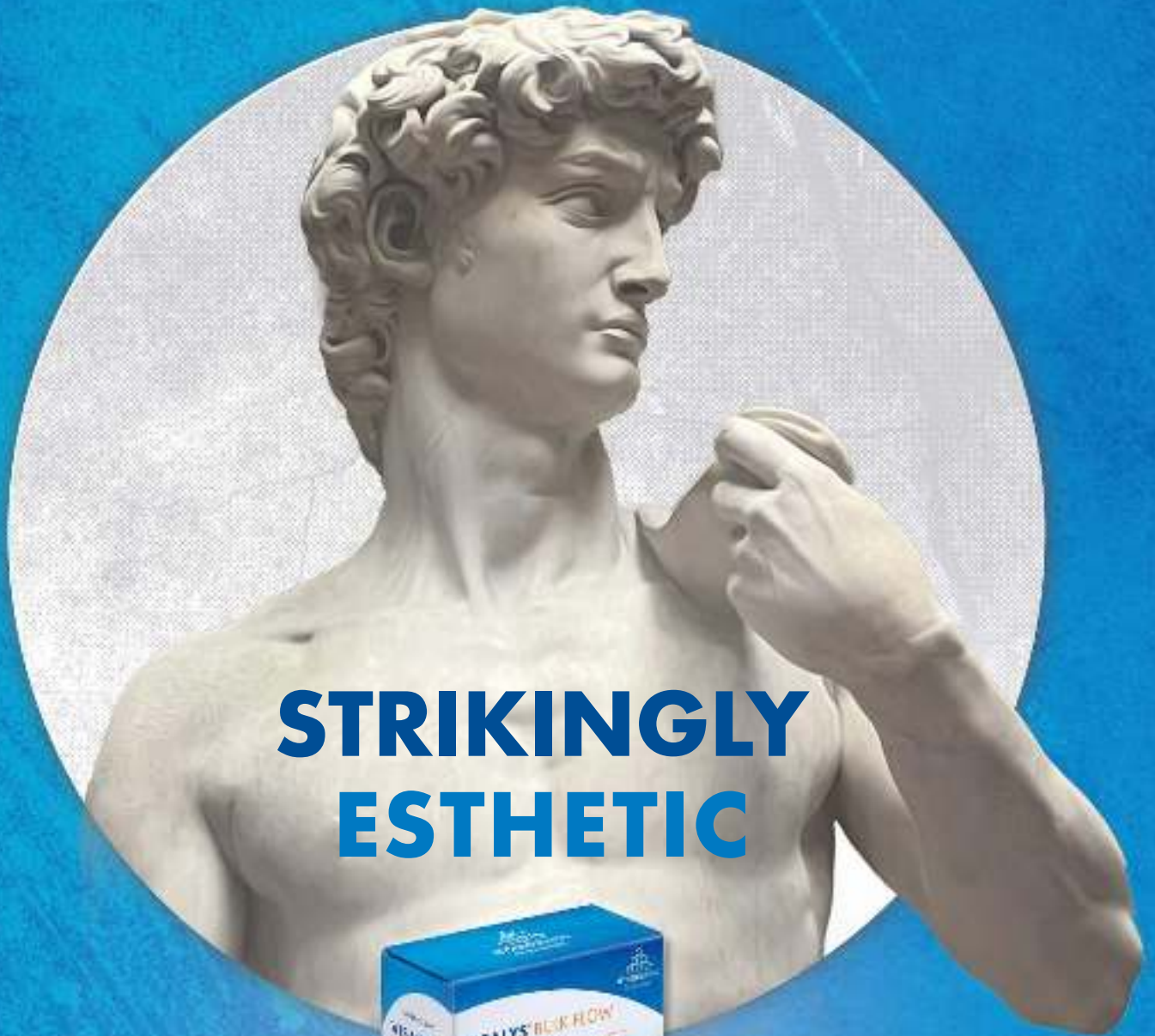


# VISALYS® BULK FLOW



KETTENBACHDENTAL  
Simply intelligent



## STRIKINGLY ESTHETIC



**FLOWABLE ONE-SHADE BULK COMPOSITE**

# VISALYS® BULK FLOW

**VISALYS® BULK FLOW**, our light curing, flowable nano-hybrid filling composite for filling cavities up to 4 mm depth. It combines efficiency, stability and esthetics.



Fascinating shade adaption with just one shade thanks to the One-Shade system. A real chameleon effect with natural fluorescence for restorations close to nature.



Exemplary fillings using VISALYS® BULK FLOW on Vita Shades



Excellent polishability for high gloss results

## USER FEEDBACK

**VISALYS® BULK FLOW** convinces with a pleasant handling, a good color adaptation and an excellent gloss.

Dr. Maximilian Dobbertin



# CONVINCING CONSISTENCY

**VISALYS® BULK FLOW** behaves like a flow but is stable and modelable like a fill.

It provides high stability and at the same time high radiopacity. Low shrinkage stress ensures a safe adaption to the cavity walls.

**No oozing thanks to an intelligent syringe design.**  
Precise fillings without wasting material thanks to the build in movable seal.

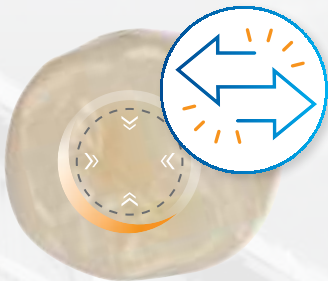


CONSISTENCY  
OF A  
**FLOW**  
WITH THE  
MODELABILITY  
OF A

**FILL**



# STRIKINGLY ESTHETIC



The **real chameleon effect** of our **One-Shade System** and a **natural fluorescence** enable vivid, natural-looking restorations.



**High covering capacity** or natural aesthetic results already from a depth of cure of 3 mm.\*



**VISALYS® BULK FLOW**



**OMNICHROMA FLOW BULK**

\*Exemplary 3 mm discs fabricated from the respective filling materials, shade „Universal“



Efficient working **without increments** or **additional capping layer**





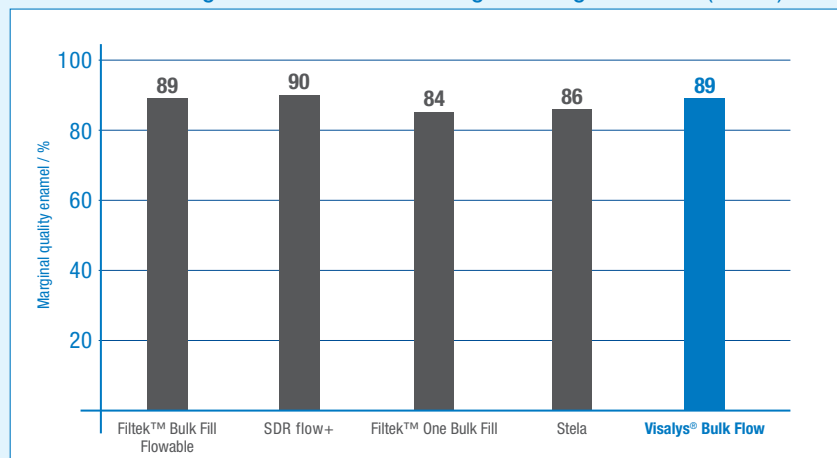
## VERY DENSE MARGINS

Excellent adaption to the cavity walls reduces the risk of marginal gaps and marginal discoloration for long lasting restorations.

Marginal quality  
on enamel



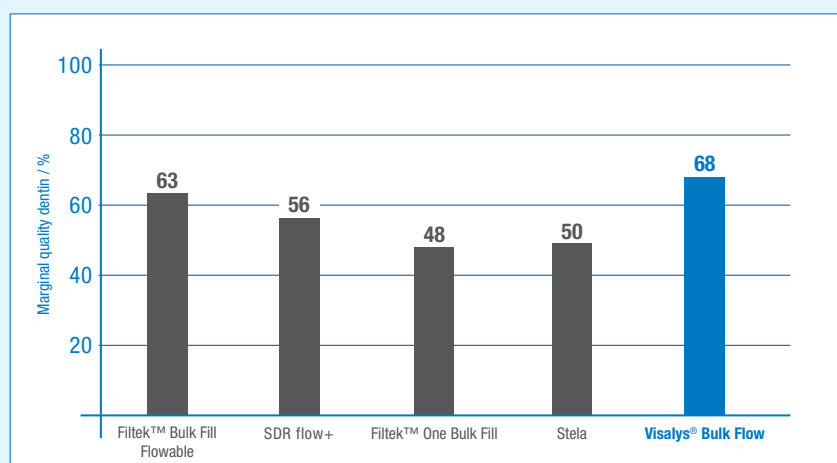
Overview chewing simulator with Marburg chewing simulator (TCML)\*



Marginal quality  
on dentin



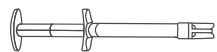
Overview chewing simulator with Marburg chewing simulator (TCML)\*



\* Messungen Prof. Roland Frankenberger, Universität Marburg, 2024.  
Thermo-Mechanische Wechselbelastung: 1.000.000 Zyklen à 50 N, 25.000 thermal cycles (5/55 °C), 264 teeth (n=8), MOD class II.

# THE RANGE

**VISALYS® BULK FLOW**



1 x 2 g Syringe  
5 x Application tips

REF 15064

**VISALYS® BULK FLOW**



15 x 0,25 g Caps

REF 15066

2 x 0,25 g Caps

REF 15067



Made in  
Germany

Kettenbach GmbH & Co. KG  
Im Heerfeld 7  
35713 Eschenburg · Germany  
Phone +49 (0)2774 7050  
info@kettenbach.com  
www.kettenbach-dental.com

DEN14110933\_1126



  
**KETTENBACHDENTAL**  
Simply intelligent